



# Baristo Park Improvements

## A 2024 Measure J Application SUMMARY

From the Baristo Neighborhood Organization





AMOUNT	OUTCOME	RECIPIENT
148,800	Phase I (Feasibility including Conceptual Design)	Sotelo
15,500	Restroom Feasibility	Sotelo
283,850	Phase II (Design)	Sotelo
37,500	Restroom Design (if feasible)	Sotelo
485,650	SUBTOTAL, Phases 1 & 2	
48,560	Contingency, 10%	Sotelo
3,000	3 Years of 3 <sup>rd</sup> -party audits of the Baristo NOrg, to ensure funds from Measure J and other grant sources are managed correctly.	Baristo Neighborhood Organization
537,210	<b>TOTAL, Phases 1 &amp; 2</b>	

## OUR ASK

We are requesting 537,210 to initiate and complete Phases 1 and 2 of our 3-Phase Project to make Baristo Park Improvements.

**Application Sections 4.7 and 4.8 list detailed line-by-line expenses for both Phases**



## The core elements of the Baristo Neighborhood are:

- Its 21 residential developments (14 Condominiums, 7 Apartments)
- Its Section 14 identity
- Its DOWNTOWN to Sunrise location
- Its role in the Palm Springs General Plan's Housing Element, as **the City's primary location for new affordable housing**
- Baristo Park
- The Baristo Channel



## WHAT IS THE BARISTO NEIGHBORHOOD?

Application Section 2.0 details the Neighborhood's character



## The Park's Main Problem is the BARISTO CHANNEL

- The Channel was built 30 years before the Park – crime and vagrancy followed the Channel long before the Park existed.
- When Baristo Park opened, February 17, 1981, the Desert Sun headline was “**Former hideout becomes park**”.
- The Channel’s design and configuration discourages essential needs of crime prevention design, including Natural Surveillance, Site Lines, Natural Access Control, Movement Predictors, Cohesion, Entrapments and more.
- In short, the Park is not used, as Neighbors feel unsafe.

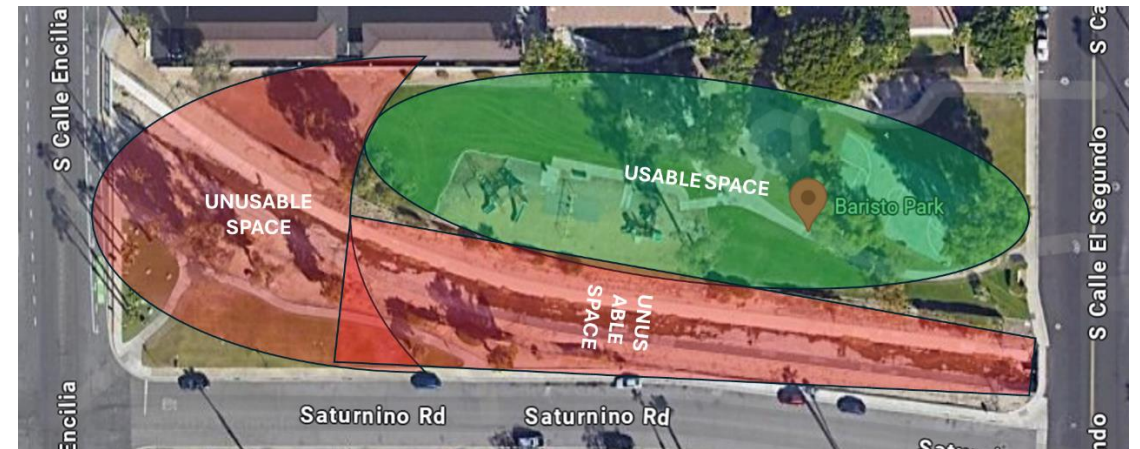
WHY ARE BARISTO PARK IMPROVEMENTS NEEDED?

Application Section 2 details these issues, and more



## Additional Issues with the CHANNEL

- Baristo Park's usability is ONE-HALF of its published 2-acre size
- The main portion of the Park is a giant entrapment area



## WHY ARE BARISTO PARK IMPROVEMENTS NEEDED?

Application Section 2 details these issues, and more





## The Solution to the Channel Problems is to OPEN the Channel

- Add foot bridges to connect both sides of the Park.
- Replace the damaged and ugly cyclone fencing with decorative fencing only where fencing is necessary.
- Transform the Channel's maintenance-service paths into open pedestrian paths.
- Create welcoming entrances.

THE CHANNEL IS AN ESSENTIAL PART OF THE COUNTY'S FLOOD CONTROL PLAN FOR OUR CITY. SO, HOW CAN THIS BE FIXED?

Application Section 5.1.1 details these solutions



The Solution to the Channel Problems is complicated, expensive and **yet is well known...and well documented.**

- The Parks and Recreation Department's **Current Master Plan** (2014) calls for exactly these changes for exactly the reasons we've stated; (except, they used the term "claustrophobia" instead of "entrapment")
- The **Section 14 Specific Plan** envisions transforming the flood channels beyond the Park, and into key portions of "*an extensively landscaped pedestrian/bikeway/shuttle network that connects with the City of Palm Spring General Plan proposed bikeways.*" Key to accomplishing this is "***A pedestrian and bicycle system on all major arterials, along the flood control system.***"

IF THESE CHANGES ARE OBVIOUS, WHY HAVEN'T THEY BEEN PUT IN PLACE?

Application Section 5.1.1 details these solutions



## New Features (to be vetted via Outreach). Examples:

- Upgraded, Updated Landscaping
- Lighting, Cameras
- Safe (and colorful!) pathways through the entire Park
- Wayfinding
- Water feature
- Sense of Entry at both ends of the Park
- Repaired basketball court with bleachers and shade, appropriate landscaping surrounding the court
- Additional shade in appropriate areas
- Removal of grills (safety)
- Upgraded (working) features, e.g. water fountain
- New (and more) benches, picnic tables
- Art (via Public Arts Commission)

## WHAT ARE THE IMPROVEMENTS TO THE PARK?

**Application Section 5 details both Improvements and Benefits to the Community.**





## BENEFITS

- The effective or usable size of Baristo Park will double
- With increased use of the Park, the instances of illicit activities will be significantly reduced
- The Baristo Neighborhood will be more attractive to affordable housing developers
- Creating a connection with Section 14 (example: a sign or monument about Baristo Sol Santiago (the Park's namesake) and his accomplishments as an early 20-th century tribal leader)
- Increase the desirability of potential employees and their families to relocated close to downtown: increase workforce availably
- Additional art
- Set a new bar for park design
- Creation of a “template” for other portions of the Baristo Channel and other such channels throughout the Valley
- Return on Investment (ROI) for homeowners, landowners, the City and the County

## WHAT ARE THE BENEFITS TO THE COMMUNITY?

**Application Sections 5.2 and 5.3 detail Benefits to the Community.**

# Throughout the County, State & Region, Washes are Being Transformed



CV Link



Grand Canalscape, Phoenix



Verdugo Wash Glendale CA Rendering



Canal Walks, Phoenix



Perris Valley Trail



The Great Wall of Los Angeles



We have addressed / met with these stakeholders, and believe that we have their support

- Parks & Recreation Commission
- Public Arts Commission
- The Parks Task Force (Mayor Bernstein, Councilmember Holstege, Arts Commission Chair Armstrong, ONE-PS Chair Ruetz, Assistant City Manager Gallavan, Naomi Soto and others...)
- Treasurer Mooney
- Councilmember deHarte (Baristo Park & Neighborhood is in his district)

In addition, we **canvased every apartment**, conducted interviews and gathered feedback.

We created a digital petition and received only support, and many comments.

We conducted additional interviews among Park users.

## COMMUNITY OUTREACH

Application Section 3 details the process and results





- **PROJECT MGMT.** We developed a 20-page RFP that resulted in our selection of Sotelo Landscape Architects who will perform and manage design & construction – their detailed proposal was uploaded along with our Application. Our NOrg will work with stakeholders to ensure sufficient oversight.
- **FUNDING.** The requested funding will cover the feasibility and design phases, to include community engagement. The Application lists statewide and federal resources that we will pursue to assist with funding for construction.
- **TIMETABLE.** Duration for Phase I, feasibility, is projected at 4 months. We believe that Phases 1 and 2 can be completed in 2025. The Construction Phase could be completed within 12 months once we obtain funding.

## PROJECT MANAGEMENT, FUNDING SOURCES, PROJECT DURATION

Project Management Section 4.11, Funding Resources Section 6, Duration Section 4.10



# CONCLUSION

Baristo Park is the only park in the City's densest Neighborhood, the Baristo Neighborhood.

The Baristo Neighborhood may also be the most-populated of Palm Springs' 52 Neighborhoods.

Baristo Park is the only park within Section 14.

Baristo Park is the only park on downtown's south side.

Baristo Park is the only park with a Channel running through it.

With the new Measure J funding for Community-Initiated Projects, now is the time make the Park and the Park experience worthy of its City's reputation.